



Estd.: 1991

SOMANATH EDUCATIONAL TRUST'S  
**S. B. PATIL INSTITUTE FOR DENTAL SCIENCES & RESEARCH**  
**BIDAR – 585 402 (KARNATAKA)**

(Affiliated to Rajiv Gandhi University of Health Sciences & Recognised by Dental Council of India)  
Email: [principalsbpdch@yahoo.co.in](mailto:principalsbpdch@yahoo.co.in) [www.sbpatilcollege.co.in](http://www.sbpatilcollege.co.in)  
Ph.: 08482 232101-232588 Fax.: 08482-232101

---

**NAAC CRITERIA 4.4.2**

**IT FACILITIES AND COMPUTER AVAILABILITY FOR STUDENTS  
INCLUDING WI-FI**

S B Patil Institute for dental sciences and research is equipped with computers and IT facilities to enhance the learning process of students. The institution provides broadband dedicated to PG departments and Wi-Fi in the college campus. Centralised UPS and generator support all the computers and audio-visual systems in the lecture halls and seminar halls. Faculty and student can also access e-journals through the internet facilities available in the library which has consequently enhanced the teaching and learning. Access to various online resources is being made available to all the students and faculty of the institution. The access is through IP range of the campus which offers open access to online resources within the campus. The institution upgrades the IT infrastructure and associated facilities whenever required.

*S. B. Patil*

**PRINCIPAL**  
**S.B. Patil Institute for**  
**Dental Science & Research**  
**NAUBAD, BIDAR-585402**  
**(Karnataka)**

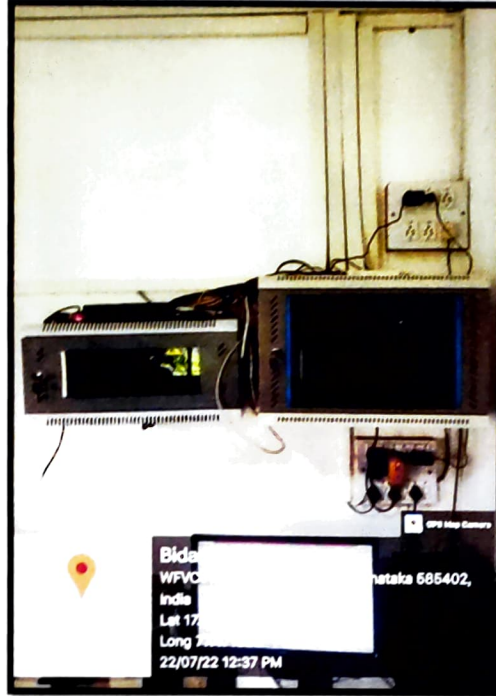


SOMANATH EDUCATIONAL TRUST'S  
**S. B. PATIL INSTITUTE FOR DENTAL SCIENCES & RESEARCH**  
**BIDAR – 585 402 (KARNATAKA)**

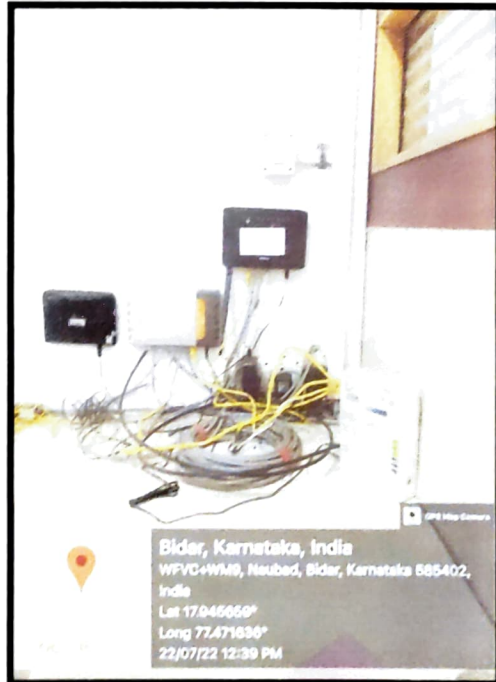
(Affiliated to Rajiv Gandhi University of Health Sciences & Recognised by Dental Council of India)  
Email: principalsbpdeh@yahoo.co.in www.sbpatil dentalcollege.co.in  
Ph.: 08482 232101-232588 Fax.: 08482-232101

Estd.: 1991

**CENTRAL SERVER**



**INSTALLED WIFI  
DEVICE**



*Somanath*  
**PRINCIPAL**  
**S.B. Patil Institute for**  
**Dental Science & Research**  
**NAUBAD, BIDAR-585402**  
**(Karnataka)**



SOMANATH EDUCATIONAL TRUST'S  
**S. B. PATIL INSTITUTE FOR DENTAL SCIENCES & RESEARCH**  
**BIDAR – 585 402 (KARNATAKA)**

(Affiliated to Rajiv Gandhi University of Health Sciences & Recognised by Dental Council of India)

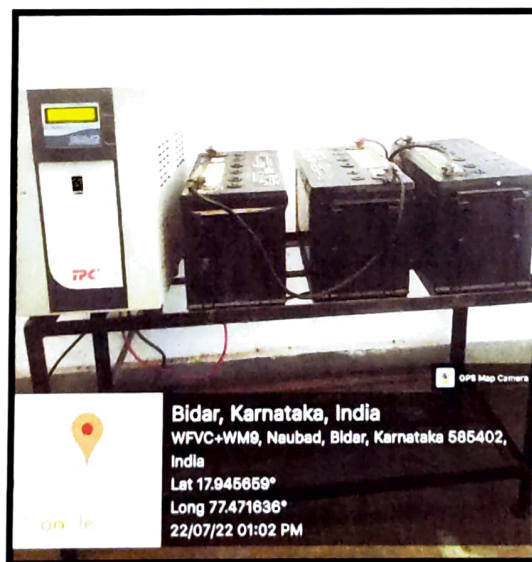
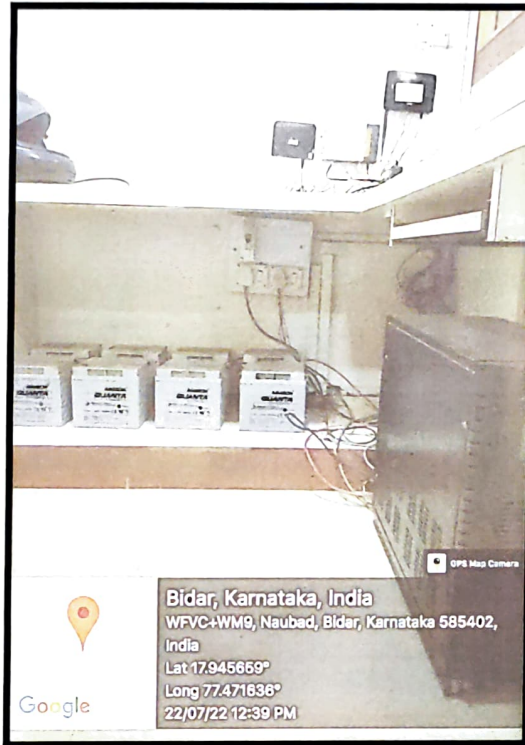
Email: [principalsbpdch@yahoo.co.in](mailto:principalsbpdch@yahoo.co.in) [www.sbpatil dentalcollege.co.in](http://www.sbpatil dentalcollege.co.in)

Ph.: 08482 232101-232588 Fax.: 08482-232101

Estd.: 1991

---

**UPS AND LAN DEVICES SUPPORTING THE DIGITAL LIBRARY**



*Somanath*  
**PRINCIPAL**  
**S.B. Patil Institute for**  
**Dental Science & Research**  
**NAUBAD, BIDAR-585402**  
**'Karnataka'**



SOMANATH EDUCATIONAL TRUST'S  
**S. B. PATIL INSTITUTE FOR DENTAL SCIENCES & RESEARCH**  
**BIDAR – 585 402 (KARNATAKA)**

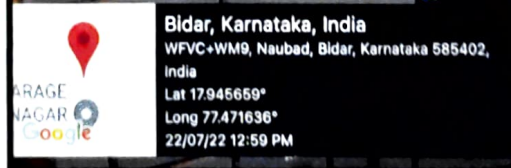
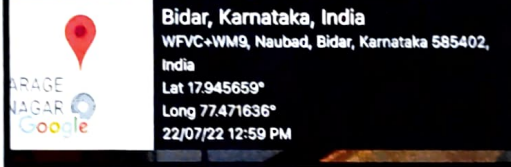
(Affiliated to Rajiv Gandhi University of Health Sciences & Recognised by Dental Council of India)

E-mail: principalsbpdch@yahoo.co.in www.sbpatil dentalcollege.co.in

Ph.: 08482 232101-232588 Fax.: 08482 232101

Estd.: 1991

**POWER SUPPLY BOARDS FOR DIFFERENT DEPARTMENTS**



*Somanatha*  
**PRINCIPAL**  
**S.B. Patil Institute for**  
**Dental Science & Research**  
**NAUBAD, BIDAR-585402**  
**(Karnataka)**